

name _____ Date _____ Per _____

Manipulating Graphs.

BF.3

Use the following equation for each problem below:

$$f(x) = y = 2x - 1$$

If $f(x) = y$ & $f(x)$ only tells you what to do to manipulate the equation.

① $f(x) =$ _____

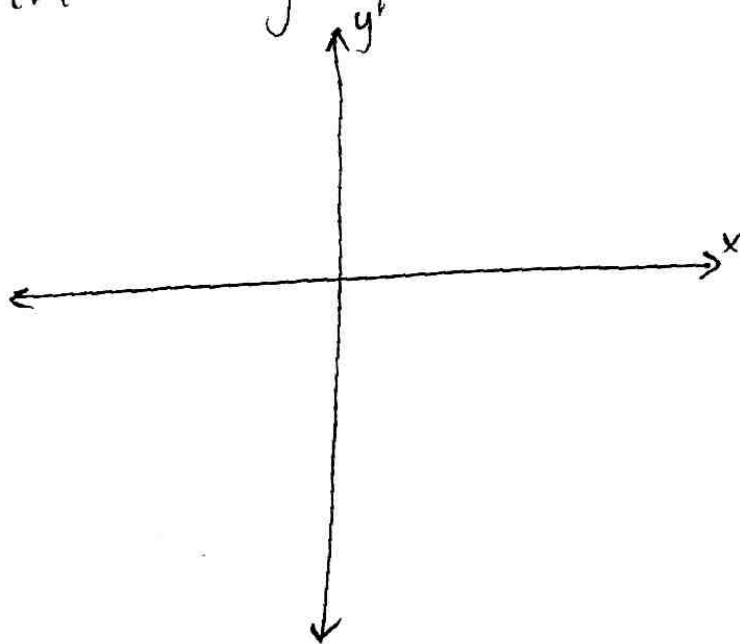
② $f(x) + 2 =$ _____

③ $2f(x) =$ _____

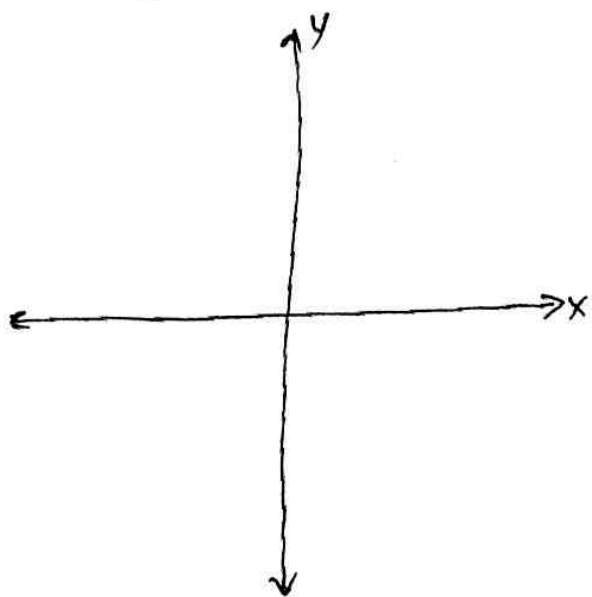
④ $f(2x) =$ _____

⑤ $f(x+2) =$ _____

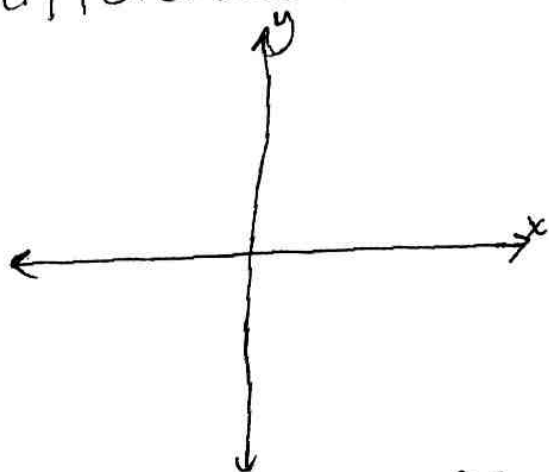
⑦ Graph $f(x)$ & $f(x)+2$ and describe the change in the graphs.



- ⑧ graph $f(x)$ & $2f(x)$ and describe the change in the lines.



- ⑨ Graph $f(x)$ & $f(2x)$ and describe the difference in the lines.



- ⑩ Graph $f(x)$ & $f(x+2)$ & describe the change.

